



## **Construction activities performed during the Week of 11/19/2017 – 11/25/2017 are listed below:**

- Sterling completed excavating and subgrade for detour construction in Phase 1 on the west side of FM 1626.
- Subcontractor Austin Materials completed paving operations for the Phase 2 temporary widening from RM 967 to north of Cole Springs Rd.
- Subcontractor TRP completed the striping operation for the traffic switch into Phase 2.
- Subcontractor Levy completed the adjustment of the signals for the traffic switch in Phase 2.
- Sterling completed the traffic switch into Phase 2 configuration.
- Sterling continued constructing forms for column construction at Mustang Creek bridge.
- Subcontractor Ellis & Ellis completed the waterline construction for Waterline C south of RM 967.
- Subcontractor Voges continued drilled shaft construction at the interior bents of the Onion Creek bridge (4 of 20 complete).
- Subcontractor RSI began the temporary seeding on the west side of FM 1626.

## **Anticipated activities for the next week are as follows:**

- Sterling to begin earthwork for Phase 2 on the east side of FM 1626 north of FM 2770.
- Sterling to continue column construction at Mustang Creek Bridge
- Subcontractor Voges to continue drilled shaft operations at Onion Creek bridge.
- Subcontractor DC Civil to continue Waterline B construction along the east ROW at SE corner of RM 967 to North of Hy Rd.
- Coordination with TxDOT and County to monitor signal performance at FM 2770 intersection.

If you have any questions during the construction of this project please contact my assistant, Jennifer Scott, at 512-262-2091, or check the project website, [www.improve1626.com](http://www.improve1626.com) . Thank you for your patience during the construction of these much needed improvements.

Thank you,

Mark Jones  
Commissioner  
Precinct 2

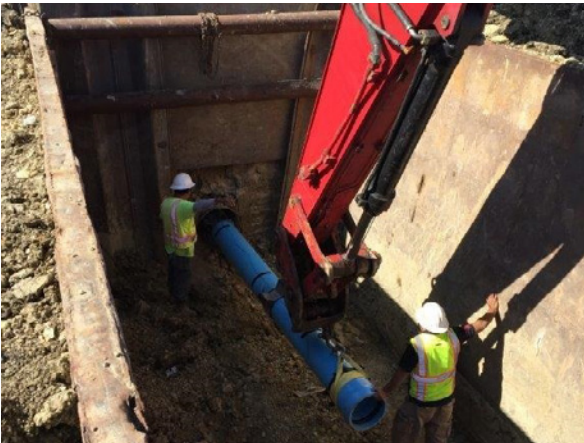




1. Sterling Placing Barrier for Phase 2 at Oyster Crk



2. Austin Material Paving Temp Widening N of Cole Springs



3. Ellis & Ellis Installing Waterline S of RM 967



4. TRP Removing Existing Striping at RM 967



5. TRP Placing Phase 2 Pavement Markers



6. Levy Adjust Signals for Phase 2 at RM 967



7. Voges Placing Steel for Bent 6 Dilled Shaft at Onion Crk



8. RSI Placing Temp Seeding along FM 1626

